

DRIVE THE CHANGE



BR.2018.04.0085.02.04

CORMIDI

C85

MINI TRACK DUMPER



DRIVE THE CHANGE

MAXIMUM EFFICIENCY



Endless hours of testing and fine tuning made the C85 the best in its class for performance and reliability. We created a durable machine with maintenance cost close to none.

UNDERCARRIAGE



Our undercarriage is like no one. Our Cormidi R&D department put all its experience towards creating the best undercarriage available on the market

SIMPLY INCREDIBLE



The Cormidi design lab created a machine that mixes industrial design with strength, power and easy to use

STRENGTHS



The C85 puts incredible power in a compact and sturdy machine



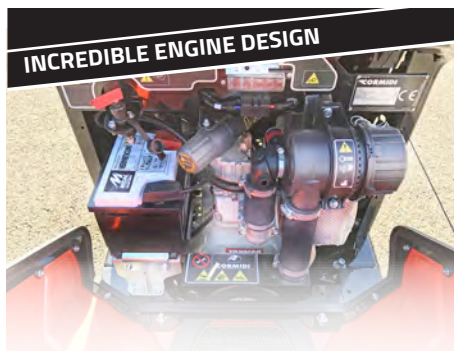
The operators has a perfect access to all the controls and can keep all the parameters under control



The swinging bucket not only load the dumper but can unload it frontally



The window on the left side of the unit allow an immediate check of the fuel level



The design of the engine compartment allows easy access to all the component



Greasing the undercarriage is easy and fast: nothing has to be taken apart.



the diesel machine has a key protected fuel cap



Galvanized sheet, protects the moving parts from materials that could damage them



The air/water cooling system allows the machine to operate in extreme conditions

CORMIDI

C85

MINI TRACK DUMPER



DRIVE THE CHANGE

STRENGTHS



The machine can be radio controlled for dangerous jobs.



Cooling system really efficiently help work in every condition.



Maintenance free throttle.



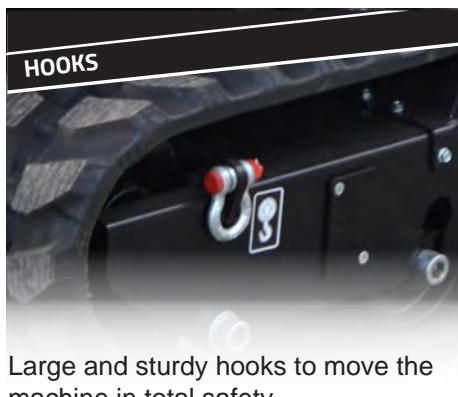
Connecting accessory that need more hydraulics has never been so easy.



A buzzer will alert the operator in case of necessity and display always allows easy reading of the working hours.



Mechanical parking and emergency brake.



Large and sturdy hooks to move the machine in total safety.



The machine's undercarriage oscillated to follow the terrain profile for increased stability and comfort.



When the situation needs a shorter unit, the stand can be closed, otherwise it opens to let the operator in.

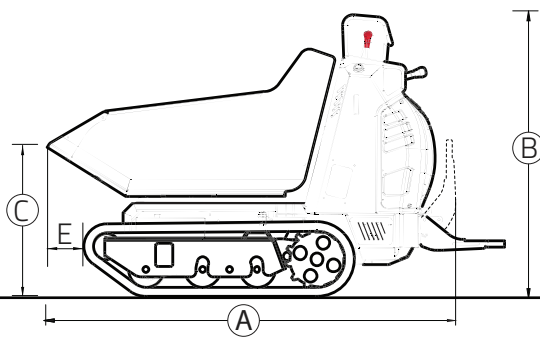
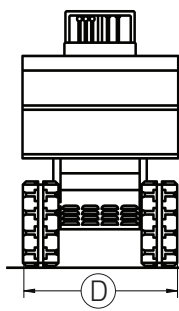
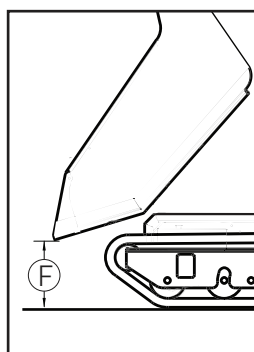
CORMIDI

CBS

MINI TRACK DUMPER



DUMPER (RI)



	mm	inch.
A	2120	A 83.5
B	1336	B 52.6
C	739	C 29.1
D	810	D 31.9
E	285	E 11.22
F	250	F 9.84

	C10.85	C13.85	C14.85
OPERATIVE CAPACITY	800 kg 1764 Lb	800 kg 1764 Lb	800 kg 1764 Lb
TOTAL WEIGHT	566 kg 1248 Lb	541 kg 1193 Lb	588 kg 1296 Lb
STRUCK	0,28 m ³ 0.33 yd ³	0,28 m ³ 0.33 yd ³	0,28 m ³ 0.33 yd ³
HEAPED SAE	0,36 m ³ 0.45 yd ³	0,36 m ³ 0.45 yd ³	0,36 m ³ 0.45 yd ³

CORMIDI

CBS

MINI TRACK DUMPER



DRIVE THE CHANGE